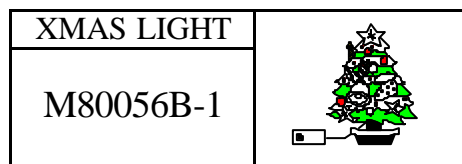




8 FUNCTIONS  
XMAS LIGHT CONTROL

8 段功能單鍵  
聖誕燈串控制 IC



FEATURES 功能敘述

- 1 key operation.
- Operation mode : 8 modes.
- Direct drive SCR.

MODE	FUNCTIONS	功能
1	COMBINATION	第二段到第七段
2	IN WAVES	2 種 波浪前進後退
3	SEQUENTIAL	4 種 跑馬
4	SLO-GOL	3 種 單燈漸明漸暗
5	CHASING / FLASH	跑馬前進後退, 星星閃爍
6	SLOW FADE	3 種 四燈同時漸明漸暗
7	TWINKLE / FLASH	星星閃爍, 跑馬
8	STEADY ON	燈串固定不閃

APPLICATION 產品應用

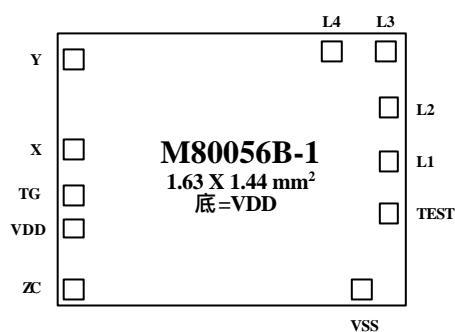
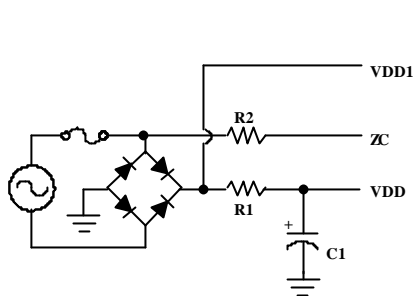
Xmas light controller, any AC control toy.

ELECTRICAL CHARACTERISTICS 電氣規格

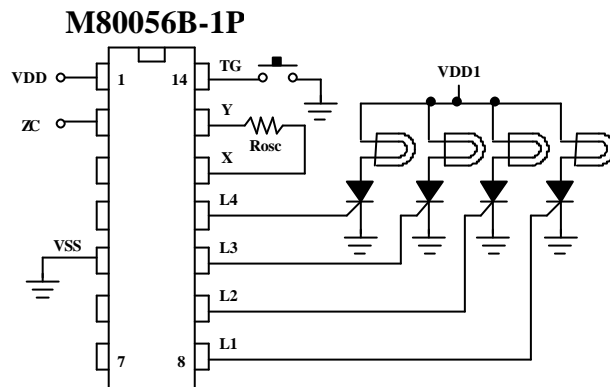
( @  $V_{DD}=4V$  unless otherwise specified )

Characteristics	Sym.	Min.	Typ.	Max.	Unit	REMARKS
工作電壓 Operating Voltage	$V_{DD}$	3	4	5	V	
工作電流 Operating Current	$I_{OP}$			2	mA	No load
靜態電流 Quiescent Current	$I_{SB}$				$\mu A$	
推動電流 BZ Driving Current	$I_{OH}$		0.2		mA	@ $V_{DS}=1V$
振盪頻率 Oscillator Frequency	$F_{OSC}$		125		KHz	$\pm 30\%$ TOL.
工作溫度 Operating Temperature	Temp.	0	25	60		

APPLICATION DIAGRAM 參考電路圖



	AC110V 60Hz	AC220V 50Hz	AC24V 50Hz
R1	82K	180K	20K
R2	1M	1M	1M
C1	47 $\mu$ /16V	47 $\mu$ /16V	47 $\mu$ /16V
Rosc	200K	220K	240K

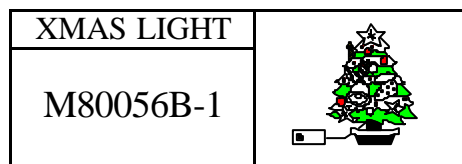


\* All specs and applications shown above subject to change without prior notice.  
( 以上電路及規格僅供參考,本公司得逕行修正 )

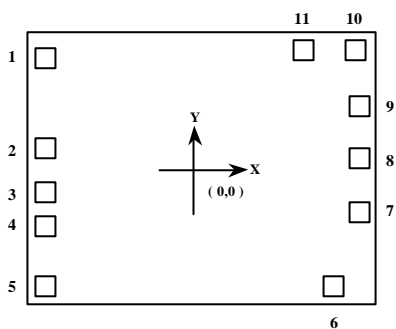


8 FUNCTIONS  
XMAS LIGHT CONTROL

8 段功能單鍵  
聖誕燈串控制 IC



**PAD ASSIGNMENT & POSITION**



UNIT : um

No.	NAME	X	Y
1	OSC2	-654	463
2	OSC1	-654	79
3	TG	-654	-107
4	VDD	-654	-261
5	ZC	-654	-510
6	VSS	543	-507
7	TEST	656	-187
8	L1	651	37
9	L2	642	259
10	L3	625	504
11	L4	405	504

\* CHIP SIZE ~ 1.63 x 1.44 mm<sup>2</sup>

\* IC substrate should be connected to VDD in PCB (PCB 上 IC 必須接 VDD)