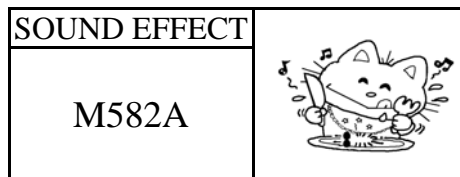




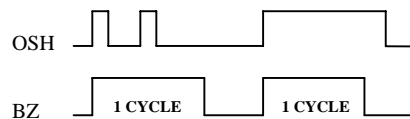
DING-DONG  
DOOR BELL

單音門鈴 IC



FEATURES 功能敘述

- Ding-Dong 2 times.
- OSH or VDD Control.
- Separate LED and BUZZER driver.



APPLICATION 產品應用

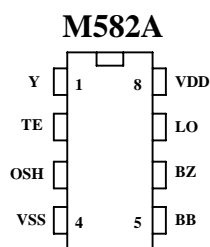
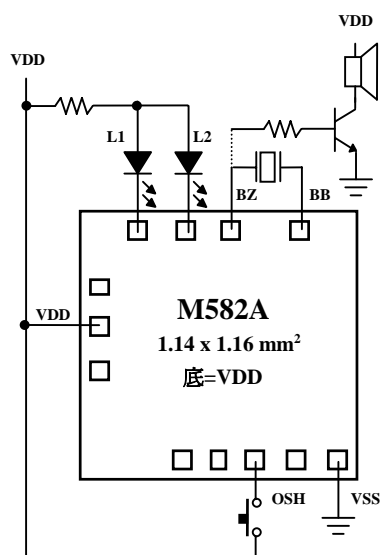
- Door Bell, Toys.

ELECTRICAL CHARACTERISTICS 電氣規格

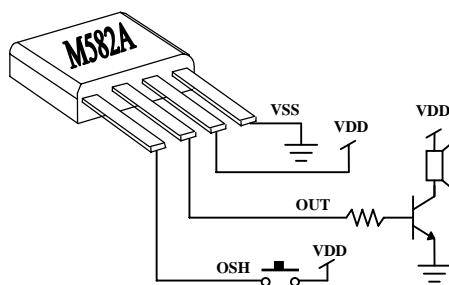
( @  $V_{DD}=3V$  unless otherwise specified )

Characteristics	Sym.	Min.	Typ.	Max.	Unit	REMARKS
工作電壓 Operating Voltage	$V_{DD}$	—	3	4.5	V	
工作電流 Operating Current	$I_{OP}$	—	0.1	0.5	mA	No load
靜態電流 Quiescent Current	$I_{SB}$	—	1	5	$\mu A$	
推動電流 BZ Driving Current	$I_O$	1	—	—	mA	@ $V_{DS}=1V$
推動電流 LO Driving Current	$I_{OL}$	6	—	—	mA	@ $V_{DS}=1.2V$
振盪頻率 Oscillator Frequency	$F_{OSC}$	—	100	—	KHz	$\pm 30\%$ TOL.
工作溫度 Operating Temperature	Temp.	0	25	60	$^{\circ}C$	

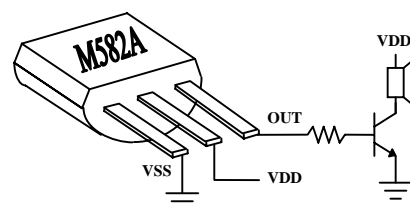
APPLICATION DIAGRAM 參考電路圖



TO93-4L ( Suffix-F )



TO92-3L



\*All specs and applications shown above subject to change without prior notice.

( 以上電路及規格僅供參考,本公司得逕行修正 )



DING-DONG  
DOOR BELL

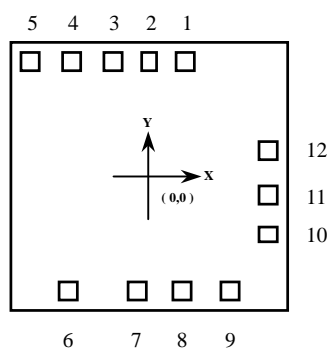
單音門鈴 IC

SOUND EFFECT

M582A



**PAD ASSIGNMENT & POSITION**



UNIT : um

No.	NAME	X	Y
1	X	201	454
2	TO	47	456
3	OSH	-103	454
4	LH	-275	454
5	VSS	-447	454
6	BB	-382	-408
7	BZ	-95	-408
8	L2	91	-404
9	L1	290	-404
10	TE	443	-258
11	VDD	446	-93
12	Y	446	88

\* CHIP SIZE ~ 1.14 x 1.16 mm<sup>2</sup>

\* IC substrate should be connected to VDD in PCB (PCB 上 IC 必須接 VDD)